

LED Linear Trunking Light

Features

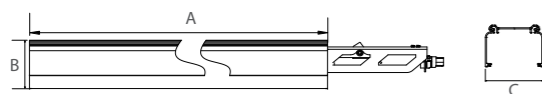
- Owned Lens Design
- 160 and 180LM/W
- Power Turnable



LED Linear Trunking System



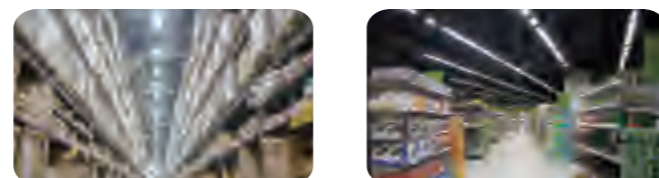
Dimension (mm)



Model NO.	Size A(mm)	Size B(mm)	Size C(mm)
TKA2	578	84	64.5
TKA4	1150	84	64.5
TKA5	1438	84	64.5
TKA9	2876	84	64.5

Application

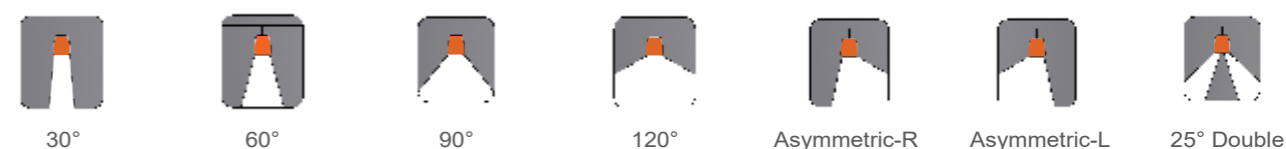
- Conference rooms / Exhibition / showrooms,
- Entrance / reception areas / Factories / warehouses



LED Module



Beam Angle



Non-Dimming

Length	Product Code	Power	Lumen	LM/W	Input Voltage	CCT	Driver Brand
1438mm	RSL5-60-T1	60W can adjust 55W/50W/42W	MAX 9600LM	160 LM/W	AC 220-240V	3000-6500K	TRIDONIC
	RSL5-60-S1	60W can adjust 50W/42W/32W	MAX 9600LM	160 LM/W	AC 220-240V	3000-6500K	OSRAM
1438mm	RSL5-55-T1	55W can adjust 50W/45W/42W	MAX 9600LM	180 LM/W	AC 220-240V	3000-6500K	TRIDONIC
	RSL5-55-S1	55W can adjust 50W/42W/32W	MAX 9600LM	180 LM/W	AC 220-240V	3000-6500K	OSRAM

1-10V Dimming

Length	Product Code	Power	Lumen	LM/W	Input Voltage	CCT	Driver Brand
1438mm	RSL5-72-A3-00	72W can adjust 68W/64W/60W	MAX 9600LM	140 LM/W	AC 220-240V	3000-6500K	ENECE Driver
1438mm	RSL5-72-A3-01	72W can adjust 68W/64W/60W	MAX 11000LM	160 LM/W	AC 220-240V	3000-6500K	ENECE Driver

Dali Dimming

Length	Product Code	Power	Lumen	LM/W	Input Voltage	CCT	Driver Brand
1438mm	RSL5-70-T4-00	16-70W	MAX 9600LM	150 LM/W	AC 220-240V	3000-6500K	TRIDONIC
1438mm	RSL5-65-T4-01	16-65W	11000LM	180 LM/W	AC 220-240V	3000-6500K	TRIDONIC

Trunking Datasheet

Black



White



Length	Model No.	Wires	Function	Discription
1150mm	TKA4-05W	5 wires	Non-Dimming	5 x 2.5 mm ² cable pre-wired
	TKA4-07W	7 wires	1-10V /Dali	7 x 2.5 mm ² cable pre-wired
	TKA4-11W	11 wires	Emergency	11 x 2.5 mm ² cable pre-wired
1438mm	TKA5-05W	5 wires	Non-Dimming	5 x 2.5 mm ² cable pre-wired
	TKA5-07W	7 wires	1-10V /Dali	7 x 2.5 mm ² cable pre-wired
	TKA5-11W	11 wires	Emergency	11 x 2.5 mm ² cable pre-wired
2876mm	TKA9-05W	5 wires	Non-Dimming	5 x 2.5 mm ² cable pre-wired
	TKA9-07W	7 wires	1-10V /Dali	7 x 2.5 mm ² cable pre-wired
	TKA9-11W	11 wires	Emergency	11x 2.5 mm ² cable pre-wired

Trunking Rail

- 4FT / 5FT /10FT /15FT Pre-wired connector
- 5, 7, 11 wires supports more function.



5 Wires Trunking Rail



5-wires trunking rail

- * Green: FG
- * Blue: N
- * Black: L1, L2, L3 phase selection knob

Connector Plug Type in Luminaire	Function Description
3 Pins wire connector plug	Standard Lighting
4 Pins wire connector plug	Standard Lighting + Emergency

7 Wires Trunking Rail



7-wires trunking rail

- * Green: FG
- * Blue: N
- * Red/White: D+/D-,DIM+/DIM-
- * Black: L1, L2, L3 phase selection knob

Connector Plug Type in Luminaire	Function Description
5 Pins wire connector plug	Standard Lighting; Standard Lighting + Dimming Standard Lighting + Battery Emergency Standard Lighting + Emergency
6 Pins wire connector plug	Standard Lighting Standard Lighting + Dimming Standard Lighting + Dimming + Battery Emergency

11 Wires Trunking Rail - Length: 15FT / 10FT / 5FT / 4FT/2FT



11-wires trunking rail

- * D+/D-: Dimming driver
- * A/B/C/D: Emergency driver and battery
- * L: L1, L2, L3 phase selection knob

Connector Plug Type in Luminaire	Function Description
9 Pins wire connector plug	Standard Lighting + Dimming + Battery Emergency + Emergency System

Accessory



Track Rail Module



Sensor



Feed End Box:

For covering the connector of trunking rail when finishing the connection at the end.



Surface Mounted Kits

Material: stainless steel
Size: L53*W36*H15mm
2.5 m Max distance between two suspension points



Steel Suspension Kits

2m Steel
2.5 m Max distance between two suspension points



"-" Feed In Box:

For making it easier to input wires on hand. It can be replaced terminal block.



Chain Suspension Kits

2m Chain
2.5 m Max distance between two suspension points



Chain Suspension Kits without Chain

2.5 m Max distance between two suspension points



"L" Feed In Box:

For trunking rail connection by corner.



Feed in connector

5wires /7 wires /11 wires
For connection with input wires from the back of trunking rail.



Feed End connector

5wires /7 wires /11 wires
For connection with output wires from the back of trunking rail.



"T" Feed In Box:

For trunking rail connection by two corner.



End Cap

Print customer's logo
Output wires by the hole
2 hole 5wires, 7 wires and 11 wires



PC Blank Cover

For covering the trunking rail which has no luminaire.
2FT/5FT
White



"X" Feed In Box:

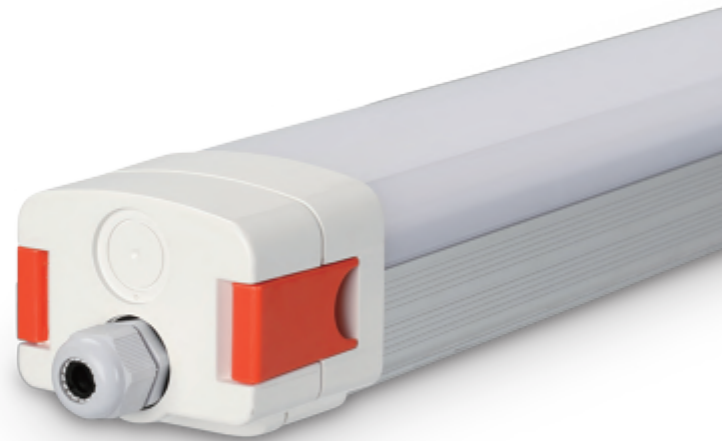
For trunking rail connection in the central corner.

LED Tri-proof Light

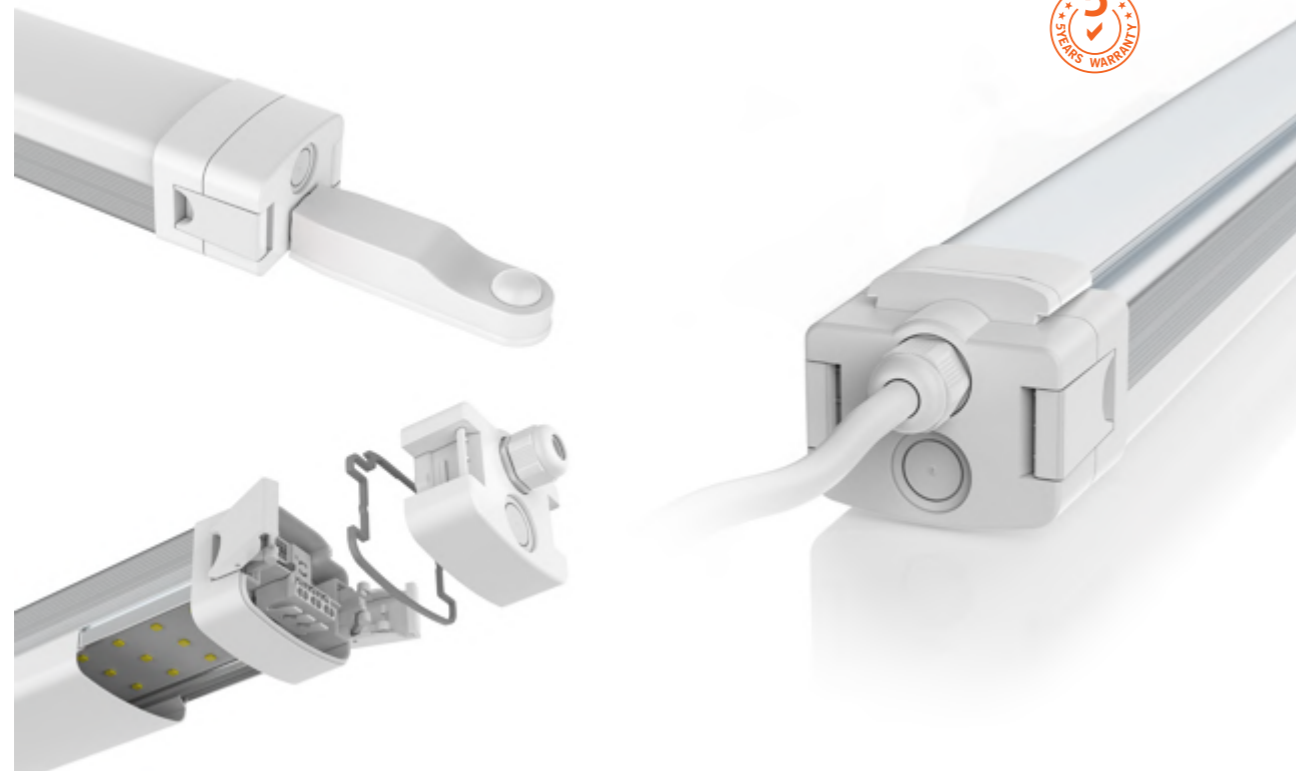
IP66 / IK10

Features

- Open without Tools
- Different color locks
- Power / CCT adjustable
- Tridonic or ENEC Driver
- IP66 / IK10
- Linkable
- 5 years warranty



LED Tri-proof Light



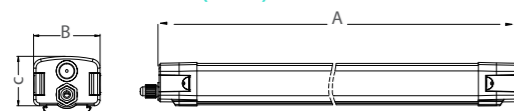
Feature

- Open without Tools
- Different color cap
- Power /CCT Switch
- Tridonic or OSRAM Driver

Options

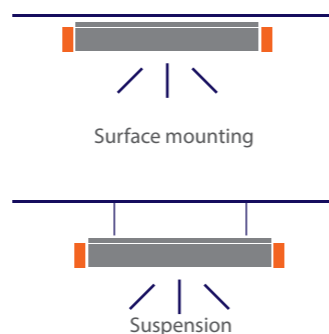
- . 1-10V Dimming
- . DALI Dimming
- . Zigbee
- . Emergency
- . Microwave Sensor
- . PIR Sensor

Dimension (mm)



Model NO.	Size A	Size B	Size C
T01 600mm	2FT (610mm)	84	63
T01 1200mm	4FT (1210mm)	84	63
T01 1500mm	5FT (1510mm)	84	63
T01 1800mm	6FT (1810mm)	84	63

Installation



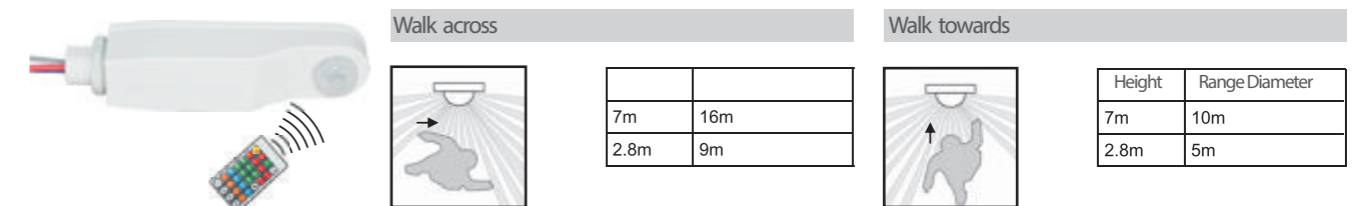
Technical / Electrical Characteristics (at TA=25°C)

Length	Product Code	Power	Lumen	Input Voltage	CCT
600mm	T012D-20-T0	20W	2200LM	AC 220-240V	3000-6500K
	T012D-30-T0	30W	3400LM	AC 220-240V	3000-6500K
1200mm	T014D-40-T0	40W	4800LM	AC 220-240V	3000-6500K
	T014D-50-TC	50W can adjust 46W/42W/36W	MAX 6000LM	AC 220-240V	3000-6500K
1500mm	T015D-40-T0	40W	4800LM	AC 220-240V	3000-6500K
	T015D-60-T0	60W	7200LM	AC 220-240V	3000-6500K
	T015D-60-TC	60W can adjust 55W/50W/40W	MAX7200LM	AC 220-240V	3000-6500K

140LM/W

Length	Product Code	Power	Lumen	Input Voltage	CCT
600mm	T012S-20-T0	20W	2600LM	AC 220-240V	3000-6500K
	T012S-30-T0	30W	4000LM	AC 220-240V	3000-6500K
1200mm	T014S-40-T0	40W	5600LM	AC 220-240V	3000-6500K
	T014S-50-TC	50W can adjust 46W/42W/36W	MAX 7000LM	AC 220-240V	3000-6500K
1500mm	T015S-40-T0	40W	5600LM	AC 220-240V	3000-6500K
	T015S-60-T0	60W	8400LM	AC 220-240V	3000-6500K
	T015S-60-TC	60W can adjust 55W/50W/40W	MAX7200LM	AC 220-240V	3000-6500K
	T015S-80-S1	80W	10000LM	AC 220-240V	3000-6500K

PIR Sensor



Wiring Method

• Single Wired



• Linkable (Double Wired)



Option 2:



LED Tri-proof Light

Tri-Color



TRI - COLOR



4000K 5000K 6000K



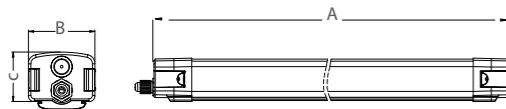
Feature

- Better for the stock
- Open without Tools
- Different color cap
- Power /CCT Switch
- Tridonic or ENEC Driver

Options

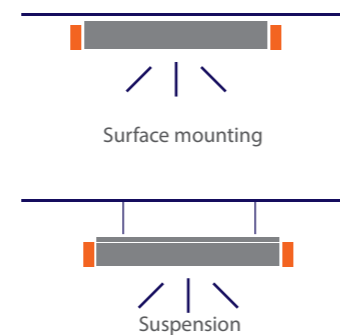
- . Emergency
- . Microwave Sensor
- . PIR Sensor

Dimension (mm)



Model NO.	Size A	Size B	Size C
T01 600mm	2FT (610mm)	84	63
T01 1200mm	4FT (1210mm)	84	63
T01 1500mm	5FT (1510mm)	84	63

Installation



Technical / Electrical Characteristics (at TA=25°C)

120LM/W

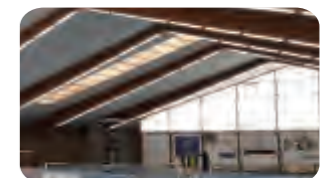
Length	Product Code	Power	Lumen	Input Voltage	Function	CCT
600mm	T012D-30NC-A0	20W or 30W	2200LM or 3600LM	AC 220-240V	Non-Dimming 1-10V	3000-4000-5000K 3000-4500-6000K 4000-5000-6000K
1200mm	T014D-50NC-TC	50W can adjust 46W/42W/36W	Max 6000LM	AC 220-240V	Non-Dimming	3000-4000-5000K 3000-4500-6000K 4000-5000-6000K
1500mm	T015D-60NC-A3	60W	7200LM	AC 220-240V	1-10V	3000-4000-5000K 3000-4500-6000K 4000-5000-6000K
	T015D-60NC-TC	60W can adjust 55W/50W/40W	Max 7200LM	AC 220-240V	Non-Dimming	3000-4000-5000K 3000-4500-6000K 4000-5000-6000K

140LM/W

Length	Product Code	Power	Lumen	Input Voltage	Function	CCT
600mm	T012S-30NC-A0	20W or 30W	2600LM or 4000LM	AC 220-240V	Non-Dimming 1-10V	3000-4000-5000K 3000-4500-6000K 4000-5000-6000K
1200mm	T014S-50NC-TC	50W can adjust 46W/42W/36W	Max 7000LM	AC 220-240V	Non-Dimming	3000-4000-5000K 3000-4500-6000K 4000-5000-6000K
1500mm	T015S-60NC-A3	60W	8400LM	AC 220-240V	1-10V	3000-4000-5000K 3000-4500-6000K 4000-5000-6000K
	T015S-60NC-TC	60W can adjust 55W/50W/40W	Max 8400LM	AC 220-240V	Non-Dimming	3000-4000-5000K 3000-4500-6000K 4000-5000-6000K

Application

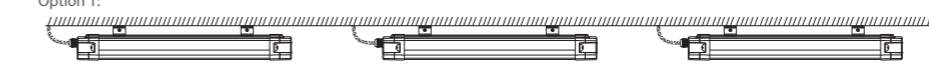
- Parking place, Tunnel / Corridor / Gallery
- Railway / Bus / MTR Station / Airport / Exhibition Hall
- Warehouse / Factory / Supermarket



Wiring Method

- Single Wired

Option 1:



- Linkable (Double Wired)



Option 2:



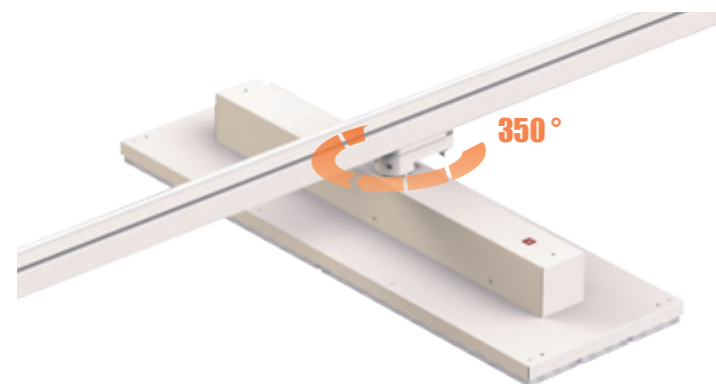
LED Linear Track Light

Features

- Best solution for shop
- Owned Lens Design
- 150LM/W
- Power Turnable



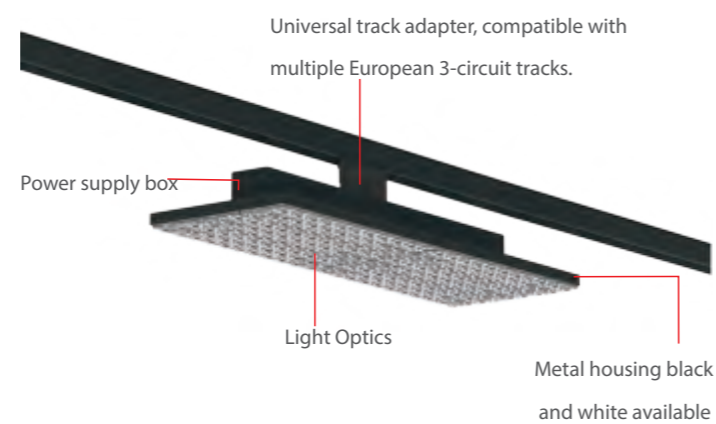
P01 LED Linear Track Light



Features

- White or Black Fixture
- Tridonic Driver
- fixed by 350° even after installation
- Higher flexibility for maximum atmosphere
- 25°/60°/90° Different Angle Beam
- 5 years warranty

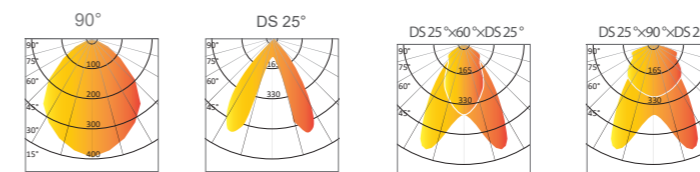
Explosion Drawing



Technical / Electrical Characteristics (at TA=25°C)

Product Code	Power	LM/W	LENS	Input Voltage	CCT	Ra	Shell Color	Function
P01- 70WD -TC	70W can adjust 64W/60W/50W	160lm/w	90 °×90 °×90 °	AC 220-240V	3000K 4000K 5000K	CRI>80 or CRI>90	White or Black	NO-Dimming
P01- 70NR -TC	70W can adjust 64W/60W/50W	160lm/w	60 °×60 °×60 °	AC 220-240V	3000K 4000K 5000K	CRI>80 or CRI>90	White or Black	NO-Dimming
P01- 70DS -TC	70W can adjust 64W/60W/50W	160lm/w	DS 25 °×DS 25 °×DS 25 °	AC 220-240V	3000K 4000K 5000K	CRI>80 or CRI>90	White or Black	NO-Dimming
P01- 7001 -TC	70W can adjust 64W/60W/50W	160lm/w	DS 25 °×90 °×DS 25 °	AC 220-240V	3000K 4000K 5000K	CRI>80 or CRI>90	White or Black	NO-Dimming
P01- 7002 -TC	70W can adjust 64W/60W/50W	160lm/w	DS 25 °×60 °×DS 25 °	AC 220-240V	3000K 4000K 5000K	CRI>80 or CRI>90	White or Black	NO-Dimming

Light Optics

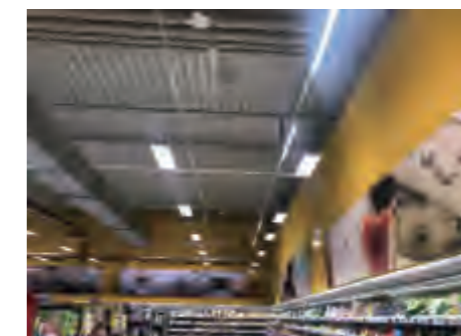
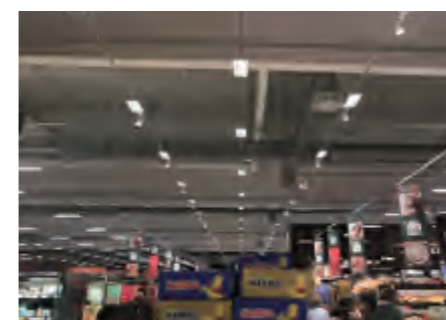


Dimension (mm)



Application

- Replacement for Normal Track Light / Clothing shop / Supermarket

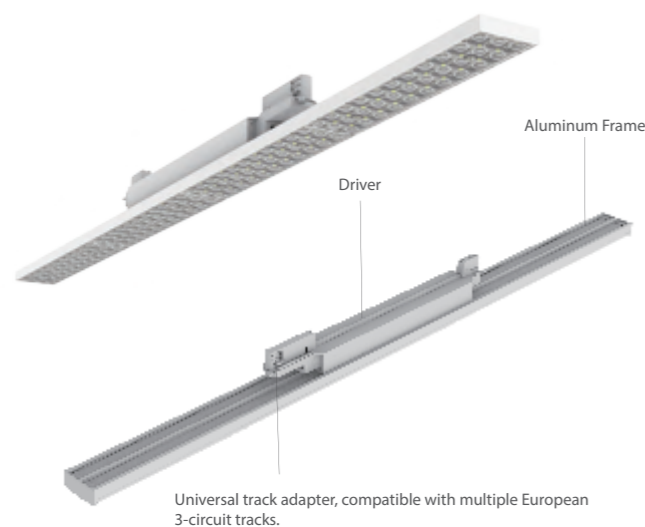


P02 LED Linear Track Light

A replacement for conventional LED trunking system light



Explosion Drawing



Features

- White or Black Fixture
- Tridonic Driver
- DS25°/30°/60°/90°/120°
- 5 years warranty

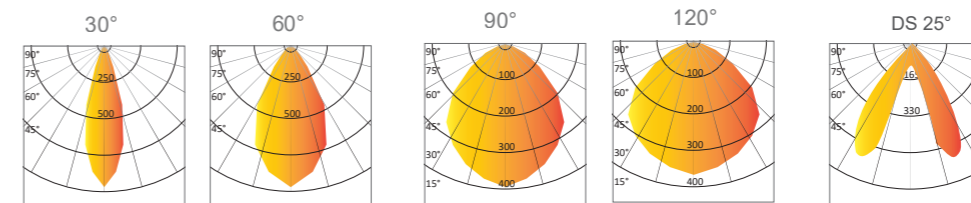
Black Fixture



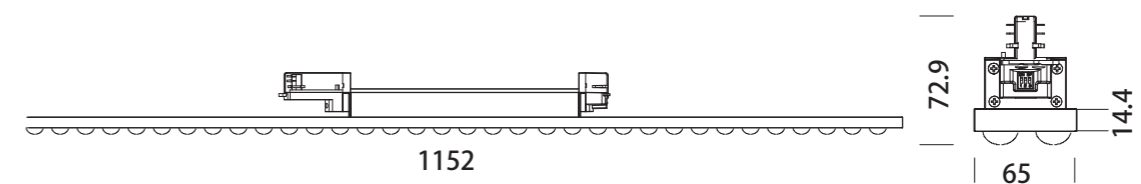
Technical / Electrical Characteristics (at TA=25°C)

Product Code	Power	LM/W	LENS	Input Voltage	CCT	Ra	Shell Color	Function
P02-48SP-TC	48W can adjust 44W/40W/34W	150lm/w	30°	AC 220-240V	3000K 4000K 5000K	CRI>80 or CRI>90	White or Black	NO-Dimming
P02-48NR-TC	48W can adjust 44W/40W/34W	150lm/w	60°	AC 220-240V	3000K 4000K 5000K	CRI>80 or CRI>90	White or Black	NO-Dimming
P02-48WD-TC	48W can adjust 44W/40W/34W	150lm/w	90°	AC 220-240V	3000K 4000K 5000K	CRI>80 or CRI>90	White or Black	NO-Dimming
P02-48DS-TC	48W can adjust 44W/40W/34W	150lm/w	DS 25°	AC 220-240V	3000K 4000K 5000K	CRI>80 or CRI>90	White or Black	NO-Dimming
P02-48FF-TC	48W can adjust 44W/40W/34W	150lm/w	120°	AC 220-240V	3000K 4000K 5000K	CRI>80 or CRI>90	White or Black	NO-Dimming

Light Optics



Dimension (mm)



Application

- Replacement for Normal Track Light / Clothing shop / Supermarket

